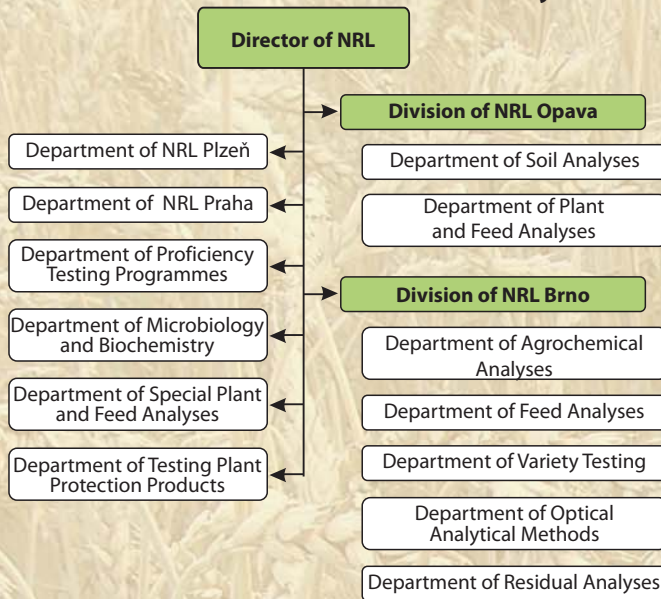




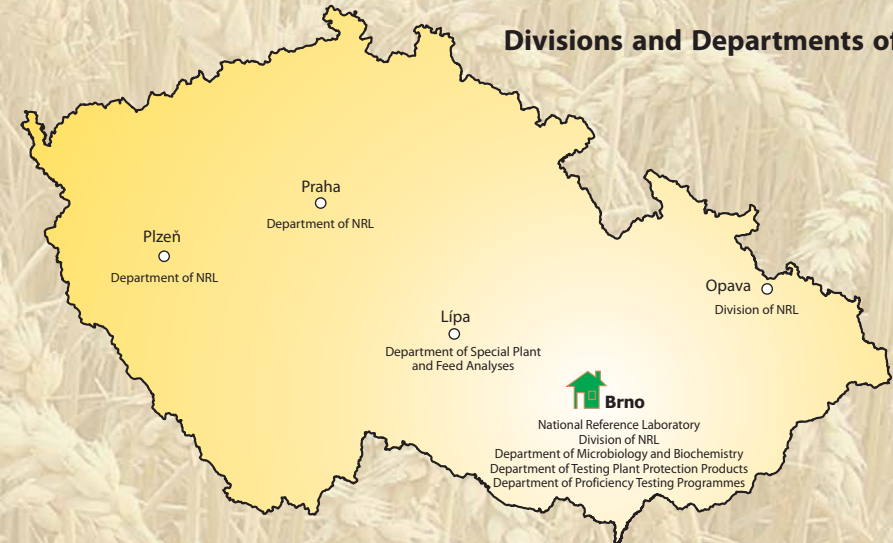
National Reference Laboratory

National Reference Laboratory (NRL) activities are defined by the legal act concerning Central Institute for Supervising and Testing in Agriculture (ÚKZÚZ).

**National Reference Laboratory**



**Divisions and Departments of NRL**



**Co-operation with Community Reference Laboratories**

Designation as National reference Laboratories in compliance with Regulation (EC) 882/2004.

- NRL for Residues of Pesticides in Cereals and Feeding Stuffs.
- NRL for Heavy Metals in Feeding Stuffs.
- NRL for Feed Additives.
- NRL for Mycotoxins in Feeding Stuffs.

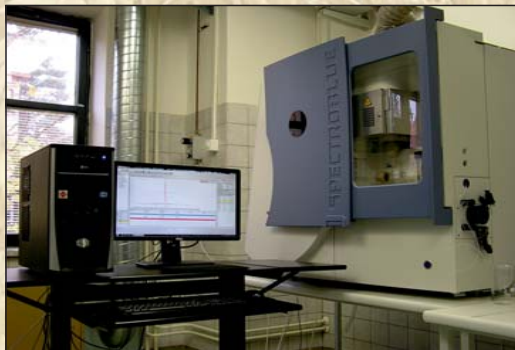
**Contact**

**ÚKZÚZ – NRL**  
 Hroznová 2  
 656 06 Brno  
 Czech Republic  
 tel.: +420 543 548 111  
[www.ukzuz.cz](http://www.ukzuz.cz)

04-2016

**Publications**

Unified work procedures, NRL Bulletin, Results of proficiency testing programmes, publication in professional journals.



- Laboratory analyses of feedingstuffs, fertilizers, soil, sludge, sediment, plant material, plant protection products and variety testing for technical divisions of the Institute.
- Laboratory methods - development, validation and introduction.
- Laboratory accreditation pursuant to ČSN EN ISO/IEC 17025:2005.
- Issuing and amending of the unified work procedures.
- Participation in creation, commenting on and introduction of relevant national standards (ČSN), European standards (CEN) and International standards (ISO) and binding provisions.
- Co-operation with Community Reference Laboratories (CRL).
- Co-operation with international organisations CIPAC and ESPAC.
- Providing of proficiency testing programmes MPZ ÚKZÚZ, accredited pursuant to ČSN EN ISO/IEC 17043.
- Issuing of Certificates of qualification and preparation of the documents for the issue and withdrawal of the authorization to perform laboratory activities for external entities in accordance with relevant acts.
- Publication in NRL Bulletin and other professional magazines.



## Divisions and Departments of NRL

### Division of NRL Brno

Analyses of soil, sludge, plant material, feeding stuffs. Special analyses of pesticides, persistent organic pollutants (POPs), mycotoxins and other natural toxins, variety testing, calibration of methods for NIRS, stability and homogeneity testing for proficiency testing programmes.



### Division of NRL Opava

Analyses of feeding stuffs, soil, including pedological parameters, polyaromatic hydrocarbons (PAHs), plant material, variety testing.



### Department of NRL Praha

Analyses of feeding stuffs, feed additives, fertilizers.



### Department of NRL Plzeň

Analyses of fertilizers, plant material, soil, water.



### Department of Special Plant and Feed Analyses

Special analyses of potato virus infections, sample cultivation, precise identification of potato varieties, quality control of rape seeds, feeding stuffs analyses.

## Divisions and Departments of NRL

### Department of Proficiency Testing Programmes

Providing of proficiency testing programmes for quality control of external laboratories, quality control of Institute laboratories.



### Department of Microbiology and Biochemistry

Detection of GMO in seeds and in raw material for feedstuffs production, detection of viral infection in plant material, special microbiological tests, soil microbiology, ecotoxicology.



### Department of Testing Plant Protection Products

Physical, chemical and technical testing of plant protection products and materials.

